

NEW AND INTERESTING SPECIES OF Acanthaceae FROM COLOMBIA

by

Dieter C. Wasshausen*

Resumen

Wasshausen, D.: New and interesting species of Acanthaceae from Colombia. Rev. Acad. Colomb. Cienc. 17 (65): 249-257, 1989. ISSN 0370-3908.

Se describen e ilustran 6 nuevas especies; se discuten y comparan sus características con las especies afines. *Ruellia cuatrecasasii* y *Aphelandra tetraoica*. y *A. antioquiensis* provienen de Antioquia, *Ruellia calimensis* proviene del Valle, *Justicia cuatrecasasii* es originaria del Vaupés y *J. Kirkbridei* proviene del Magdalena.

Abstract

Six new species of Acanthaceae from Colombia are described: *Ruellia cuatrecasasii* from depto. Antioquia, *R. calimensis* from Valle, *Aphelandra tetraoica* from Antioquia, *A. antioquiensis* from Antioquia, *Justicia cuatrecasasii* from Vaupés, and *J. kirkbridei* from Magdalena. The new taxa are described, illustrated, and compared with their closest relatives.

During the course of routine identifications, of Acanthaceae from Colombia, I have found six undescribed species in three genera. I am extremely happy to describe and dedicate a number of these new taxa, one collected by J. Cuatrecasas and L. Willard, in Dr. Cuatrecasas's honor in recognition for his outstanding and tireless contribution to our knowledge of the flora of Colombia.

Ruellia calimensis Wasshausen, sp. nov. Fig. 1 (A-C)

Herba, caulibus subquadrangulibus, glabris, nodis tumidis, perspicue cystolithigeris. Foliorum lamina oblongo-ovata, acuminata, basi angustata, glabra, integra vel leviter crenata; flores 4 vel 5 cymis aliquanto densis axillaribus; pedunculi subteretes, ramosi, glabri vel parce et minute pubescentes; bracteae infimae foliosae, supremae parvae, spathulatae; pedicelli parce pubescentes vel glabrati; calycis segmenta subulata; corolla alba, parce puberula, hypocrateriformis, levita ventricosa, lobis ovatis, rotundatis vel emarginatis; stamina inclusa. Capsulae clavatae, glabrae, stipite gracili.

Type: *J.W.L. Robinson 164*, Colombia, Valle: near Las Ollas, N.W. of Restrepo Valle, 1350 m, 9 Aug. 1962 (US holotype, CGE isotype).

Small herb to 1 m tall; stem subquadrangular, glabrous or bearing a few hairs at or near the nodes, these swollen, the cystoliths numerous and conspicuous. Leaves petiolate, the petioles 4-17 mm long minutely puberulous, the blades oblong-ovate, 10-14.5 cm long and 4-5.5 cm broad, acuminate, narrowed at base, glabrous, entire or shallowly crenate, the costa and lateral veins (8 pairs) rather prominent, the cystoliths prominent. Flowers 4 or 5, borne on dense, axillary peduncled cymes, the peduncles 5-6.5 cm long, subterete, the primary branches 1.2-1.5 cm long, the others relatively shorter, all terete and, like the peduncles, glabrous or sparingly and minutely pubescent, the trichomes spreading; lower bracts leaflike, deciduous in some plants, the uppermost bracts spatulate, 4-5 mm long and 1.25 mm broad; pedicels 2-4 mm long, minutely and sparingly pubescent or glabrate; calyx 10-11 mm long, glabrous, the segments subequal, subulate, 9 mm long, 1 mm broad; corolla white, 32 mm long, minutely pubescent, the lower half slender, 2 mm in diam., the upper half funnelform, slightly ventricose, 8 mm broad at mouth, the lo-

* Department of Botany, National Museum of Natural History, Smithsonian Institution, Washington D.C. 20560 U.S.A.

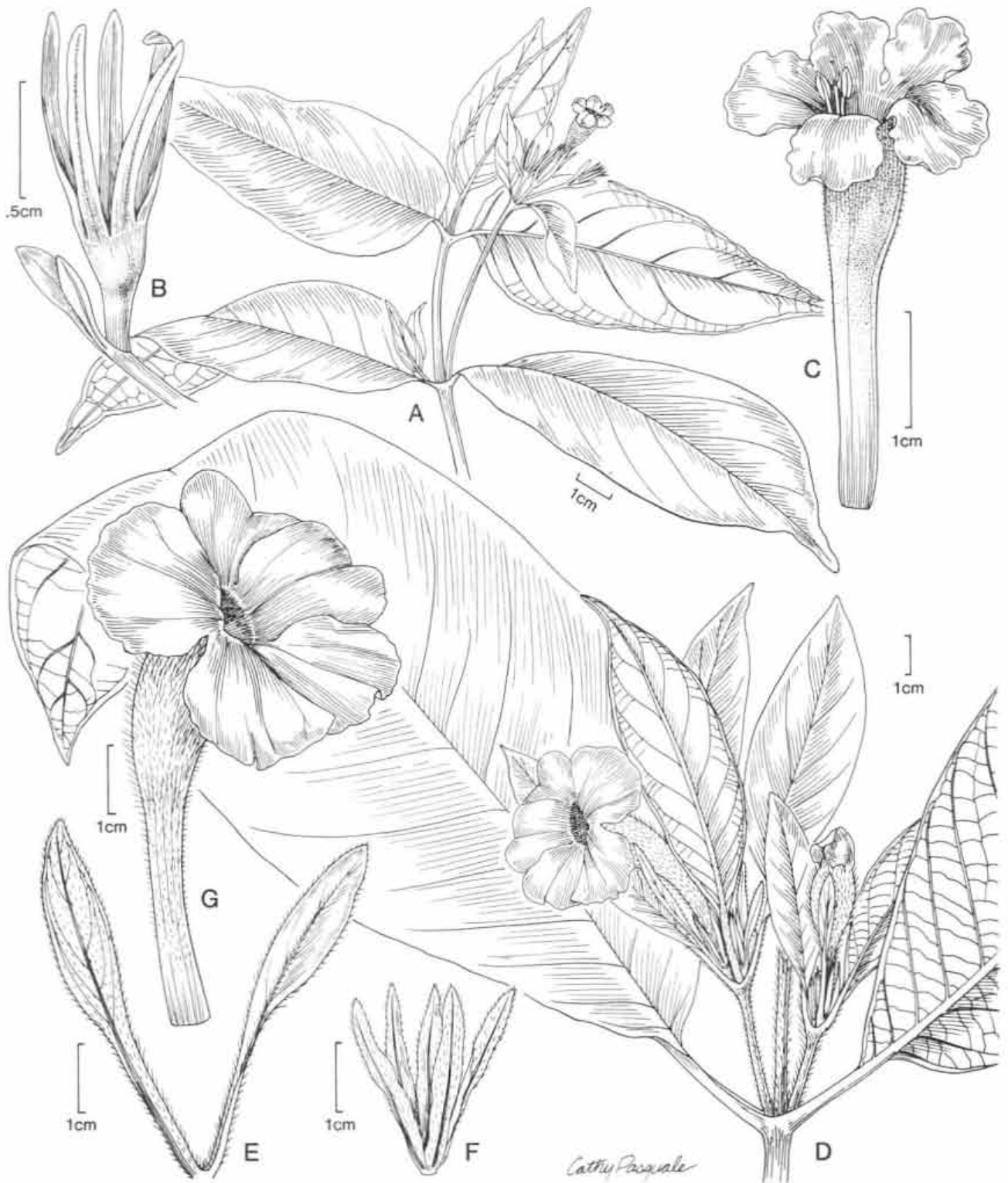


FIGURA No. 1

A-C.: *Ruellia calimensis* (J. W. L. Robinson 164). A. Flowering branch. B. Bracts and calyx. C. Corolla. -D-G.: *Ruellia cuatrecasasii* (Cuatrecasas & Willard 26123). D. Flowering branch. E. Bracts. F. Calyx. G. Corolla.

bes ovate, 6 mm long, 4-5 mm broad, rounded or shallowly emarginate, the stamens included. Capsule 1.5-1.6 cm long, glabrous, the stipe slender, 6-7 mm long, the seed bearing portion oval, 5.5 mm broad, 4-seeded, pointed.

Ruellia calimensis is related in a general way to *R. potamophila*, but it is distinguishable by the 4 or 5 flowers that are borne on dense axillary peduncled cymes, by the shorter peduncles and primary branches and the larger and broader calyx segments. This species is found on the edge of thick woodland.

Ruellia cuatrecasii Washausen, sp. nov.

Fig. 1 (D-G)

Suffrutex, caulibus subquadrangularibus, pilosulis. Foliorum lamina oblongo-elliptica, breviter acuminata, base angustata, integra, supra glabra, subtus in costa et venis appresso-pubescentibus; petioli longi, glabri vel parce pilosi. Flores axillares, pedunculi quadrangulares, angulis acutis, pubescentibus; bracteae oblanceolatae, acutae, basi angustatae, parce pilosae; calycis segmenta lance-subulata, pilosula; corolla alba, grandis, pilosa, tubo curvato, infundibuliformi, lobis suborbicularibus, rotundatis vel emarginatis; stamina exserta; antherae sagittatae; stylus pilosulus; ovarium glabrum.

Type: *J. Cuatrecasas & L. Willard 26123*, Colombia, Antioquia: Between Villa Arteaga and Chigorodó, El Tigre, ± 100 m, 1 Oct. 1961 (US holotype).

Suffrutescent, 1 mm tall; stem ascending, subquadrangular, grooved and rounded on the angles, pilose, the trichomes 1-1.5 mm long, upwardly curved or appressed. Leaves long-petiolate, the petioles 3.5-4 cm long, glabrous or sparingly pilose, the blades oblong-elliptic, 24-27 cm long, 10.5-11.5 cm broad, short-acuminate at apex, narrowed at base, entire, the upper surface dark-green, glabrous or bearing a few scattered appressed trichomes less than 0.5 mm long, the lower surface a lighter green, minutely and obscurely puberulous, especially along the costa and lateral veins (10 to 11 pairs), these more prominent on the lower surface. Flowers borne in pairs or several, peduncled, clustered in the axils of the upper leaves, the peduncles 2.3-3 cm long, sharply quadrangular, densely pilose, the trichomes 1-1.5 mm long, upwardly appressed; pedicels quadrangular, 2.5 mm long; bracts subtending the flower oblanceolate, 3.5-4 cm long and 3.5-4 mm broad, acute at apex, narrowed at base, both surfaces sparingly pilose, the trichomes upwardly appressed; calyx about 2 cm long, the segments lance-subulate, densely pilose, subequal, the posterior lobe 2.5 mm broad, the anterior pair 2 mm broad, the lateral pair 1.75 mm broad; corolla white, 6.5 cm long, moderately pilose without, especially along the throat, the tube infundibular, curved, 3 mm

broad at base, 9 mm broad at mouth, the limb 3.5 cm broad, the lobes suborbicular, rounded or emarginate, 1.5-2 cm long and broad, spreading; anthers slightly exserted, sagittate, 4-4.5 mm long; pollen grains typical, 3-porate, spheroidal 85 µm in diameter, pores more or less circular, the reticulum homobrochate (Fig. 4a-b); style slightly exceeding the stamens, pilosulous, especially towards the base; stigma lobes linear, unequal, the upper 2 mm long; ovary glabrous, Capsule not seen.

Distribution: Known only from the type locality.

Ruellia cuatrecasii is perhaps nearest in relationship to *R. tubiflora* from Panama and Colombia, but differs in that the inflorescence of *R. tubiflora* consists of a short terminal spike, there is the presence of minute glandular dots or pits on various parts of the plant and the presence of large leaflike bracts (2 to 5 cm long and 15 to 20 mm broad) supporting the flower cluster. In contrast, in *R. cuatrecasii* the flowers are borne in pairs or several, clustered in the axils of the upper leaves, the absence of the minute glandular dots or pits and the absence of the large leaflike bracts (bracts subtending the flowers oblanceolate, 3.5 to 4 cm long and 3.5 to 4 mm broad).

Aphelandra tetroicia Wasshausen, sp. nov.

Fig. 2 (A-E)

Frutex; caules teretes, dense strigosi. Foliorum lamina elliptica vel obovata, acuta vel breviter acuminata, basi angustata, in petiolum decurrens, subcoriacea, integra, utrinque glabra vel subtus in costa et venis parce strigosa; spicae 1 vel 3, terminales, sessiles, rachidibus strigosis; bracteae rubrae, ovatae, acutae et apiculatae, minute puberulae, ciliolatae; bracteolae lanceolatae, subfalcatae, striato-nervatae; calycis segmenta lanceolata vel anguste ovata, subaequalia, striato-nervata, puberula; corolla coccinea, pubescens, labio superiore erecto, bilobato, lobis anguste triangularibus, labio inferiore patulo vel reflexo, labio medio ovato, lobis lateralibus parvis, cum labio superiore basi connatis.

Type: *Juan José Hernández & Saulo Enrique Hoyos 437*, Colombia, Antioquia, Municipio de San Luis, autopista Medellín. — Bogotá, sector Río Samaná — Río Claro, 700 m, 23 Aug. 1982 (US holotype, HUA isotype).

Shrub or fallen-over shrub, 2.5-5 m tall; stem ascending, terete, the upper portions quadrangular, rather densely and retrorsely strigose, the trichomes about 0.5 mm long, brownish. Leaves sessile or short-petiolate, the petioles (unwinged portion) about 1 cm long, retrorsely strigose like the stem, the blades elliptic to obovate, 26-42 cm long, 8.5-16 cm broad, acute or short-acuminate at apex, narrowed at base and decurrent on the petiole, subcoriaceous, entire or undulate, the upper surface drying dark-green, glabrous or bearing a few scatte-

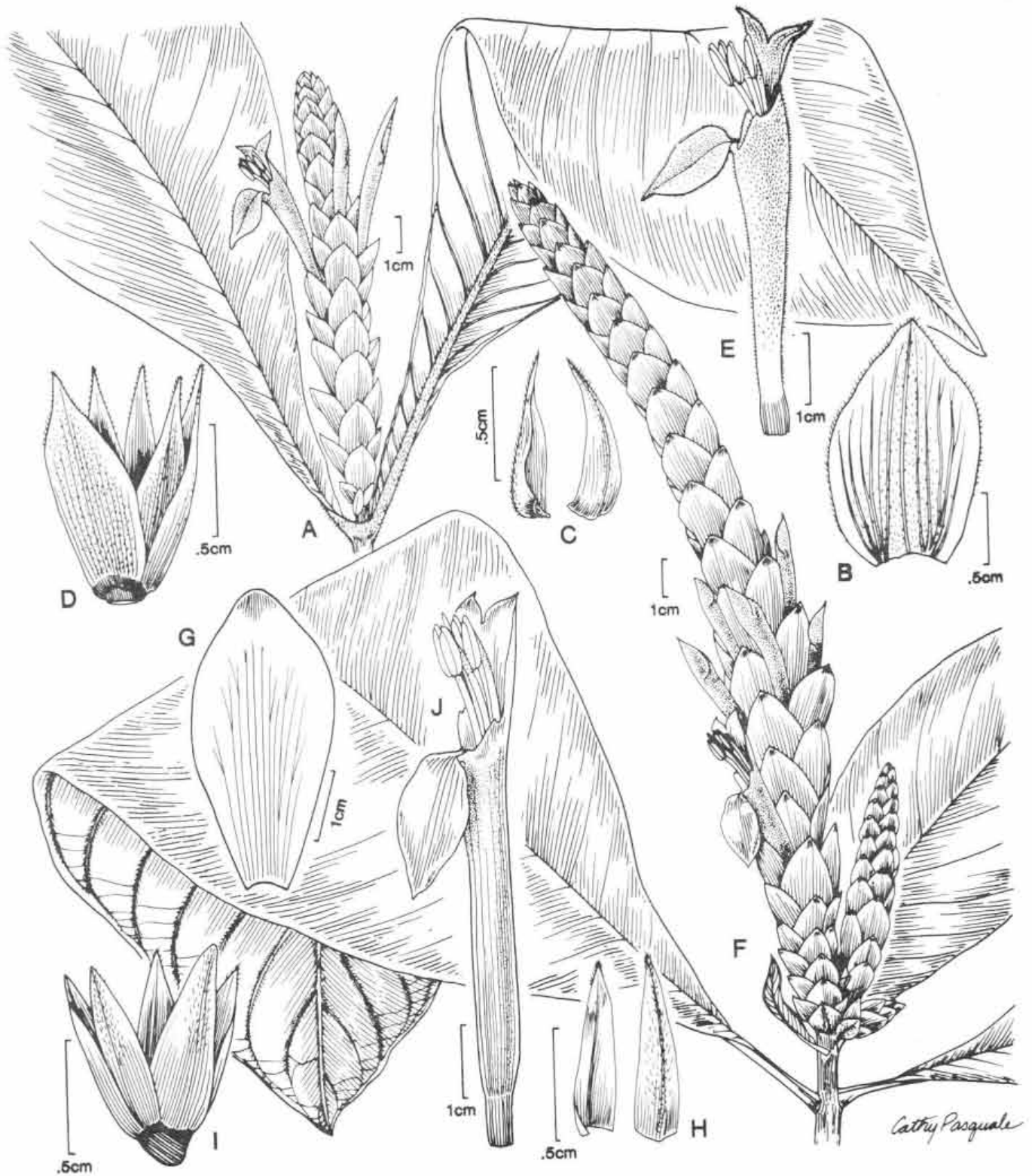


FIGURA No. 2

A-E: *Aphelandra tetraicia* (Hernández & Hoyos 437). A. Inflorescence and upper leaf blades. B. Bract. C. Bracteoles. D. Calyx. E. Corolla. -F-J: *Aphelandra antioquiensis* (Callejas et al. 2433). F. inflorescence and upper leaf blade. G. Bract. H. Bractlets. I. Calyx. J. Corolla.

red appressed trichomes less than 0.5 mm long, the costa and lateral veins (11-13 pairs) plane or slightly elevated, less prominent than on the lower surface, this drying a lighter green, subglabrous to finely strigose, the trichomes mostly less than 0.5 mm long, evenly distributed or confined chiefly to the costa and the basal portions of the lateral veins,

retroscly appressed. Inflorescence unbranched or branched at base, consisting of 1-3, terminal sessile spikes, these 12-30 cm long and 1.5-2 cm broad moderately dense, the rachis angular, strigose, the trichomes upwardly appressed, the flowers subopposite to opposite along the spike axis; bracts red, ovate, 16-19 mm long and 10 mm broad, acute and

te, 16-19 mm long and 10 mm broad, acute and minutely apiculate at apex, truncate at base, entire, closely striate striate-veined (the meshes of the reticulation compressed, subchartaceous, minutely puberulous, especially along the medial region and at base, the margins ciliolate; bracteal nectary patches composed of 5-20 discrete, oblong glands, each gland 0.50 mm long and 0.25 mm broad; bracteoles obliquely lanceolate, subfalcate, 7 mm long, carinate, 1 to 1.5 mm broad, the keel densely white-pubescent, the margins glabrous, delicately striate-nerved; calyx deeply lobed, 10 mm long, the lobes lanceolate to narrowly ovate, subequal, slenderly acuminate, the posterior segment 4 mm broad, the anterior pair 2 mm broad, the lateral pair 1.5 mm broad, all minutely puberulous without and striate-nerved, the nerves indurate at base; corolla red, 5.5-6 cm long, finely pubescent, especially the upper part of the tube, throat and upper lip, the tube erect or slightly curved 4 mm broad at base, gradually enlarged to a cylindrical, subventricose throat 6 mm broad, the upper lip erect, ovate, 12-13 mm long, bilobed at tip, the lobes narrowly triangular, 5 mm long, 3 mm broad at base, acuminate, the lower lip spreading or reflexed, the middle lobe of the lower lip ovate, 14 mm long and 6 mm broad, acuminate, carinate toward the tip, the lateral lobes 4 mm long, partly adnate to the lower part of upper lip, the free portions triangular, about 1.5 mm long and broad, acute; stamens reaching the notch of the upper lip; stamens white; anthers 5 mm long and 1.4 mm broad; ovary glabrous.

Capsule not seen.

Distribution: Common in secondary and primary disturbed forests; Antioquia at elevations between 400 and 790 meters.

Material studied: Colombia: antioquia: Municipio de San Luis, autopista Medellín — Bogotá. sector Río Samaná — Río Claro, 1.5 km E of bridge over Río Samaná, 400 m, *Adrian Juncosa & L. Escobar 747* (MO); camino hacia la vereda la Primavera, 790 m, *Alvaro Cogollo & Cruz Cecilia Estrada 213* (JAUM, MO).

In relationship, *Aphelandra tetraicia* is closest to *A. sericantha* Leonard likewise from the department of Antioquia. In comparing the two species, however, one will notice the large, elliptic to obovate (26 to 42 cm long, 8.5-16 cm broad), subcoriaceous leaf blades, the finely pubescent, larger (5.5 to 6 cm long) corollas and the smaller (10 mm long) minutely puberulous calyx segments in *A. tetraicia*. The bracts of the two species are remarkably similar. The leaf blades of *A. sericantha* are oblong-elliptic or broadly oblong-lanceolate (to 20 cm long and 5.5 cm broad), submembranaceous, the corollas to 5 cm long, densely and silkily hirsute and the calyx segments are longer (15 mm long) and glabrous.

Aphelandra antioquiensis Wasshausen, sp. nov.

Fig. 2 (F-J).

Herba vel suffrutex; caulis teres, deorsum glaber, sursum parce strigosus. Foliorum lamina elliptica vel obovata, acuta vel breviter acuminate, basi angustata, in petiolum decurrens, pergamentacea, integra, utrinque glabra vel subtus in costa et venis subglabra vel subtiliter strigosa; spicae 1 vel 3, terminales, sessiles, moderate densae, aurantiacae, rachidi glabra; bracteae aurantiacae, oblongo-ellipticae vel obovatae, obtusae et apiculatae, subchartaceae, glabrae, glandula nectaria 5-20; bracteolae lanceolatae, subfalcatae, carinatae, carina dorso pubescente; calycis segmenta lanceolata vel anguste ovata, subaequalia, striato-nervata, glabra; corolla aurantiaca, glabra proxime, glanduloso-pubescent distaliter, labio superiore erecto, bilobato, lobis triangularibus, labio inferiore patulo, labio medio ovato, lobis lateralibus parvis, cum labio superiore basi connatis.

Type: *R. Callejas, S. Churchill, P. Acevedo F. Saldarriaga 2433*. Antioquia, Municipio de Tarazá, correg. El Doce, 201 km NE de Medellín, en camino a Barroblanco, bosque de La Unión y bosque de Sta. Cruz, a lo largo de quebrada Pité, 300 m, 19 Aug. 1986 (US holotype, HUA, NY isotypes).

Herb or low shrub 2-3 meters tall; stem ascending, terete, the upper portions quadrangular, glabrous below, the upper portion retrorsely strigose, the trichomes 0.5 mm long. Leaves petiolate, the petioles 3.5-4 cm long, glabrous or sparingly hirsute, the blades elliptic to obovate, 28-35 cm long, 13-18 cm broad, acute or short-acuminate at apex, narrowed at the base and decurrent on the petiole, pergamentaceous, lustrous, entire, the upper surface drying dark-green glabrous or bearing a few scattered appressed trichomes less than 0.5 mm long, the costa and lateral veins (about 16 pairs) plane or slightly elevated, less prominent than on the lower surface, this drying a lighter green, subglabrous to finely strigose, the trichomes mostly less than 0.5 mm long, evenly distributed or confined chiefly to the costa and the basal portions of the lateral veins, retrorsely appressed. Inflorescence unbranched, consisting of terminal, 1-3, sessile spikes, these orange, 24 cm long and 2-3 cm broad, moderately dense, the rachis angular, glabrous, the flowers subopposite to opposite along the spike axis; bracts orange, oblong-elliptic to obovate, 30-33 mm long and 13-14 mm broad obtusish and minutely apiculate at apex, apparently closely striate-veined (the meshes of the reticulations compressed), opaque, bordered by a narrow subhyaline margin about 0.5 mm broad, subchartaceous, glabrous; bracteal nectary patches composed of 5-20 discrete, oblong glands, each gland 0.50 mm long and 0.25 mm broad; bracteoles lanceolate, subfalcate, 7 mm long, carinate, about 1.5 mm wide at base, gradually narrowed into a slender tip, sparingly strigose dorsally, especially towards the tip; calyx deeply lobed, 8.5 mm long, the lobes lanceolate to narrowly ovate, subequal, the posterior segment 2.3 mm broad, obtuse and tipped by a tuft of hairs about 0.25 mm long, the anterior pair 2 mm broad, acuminate,

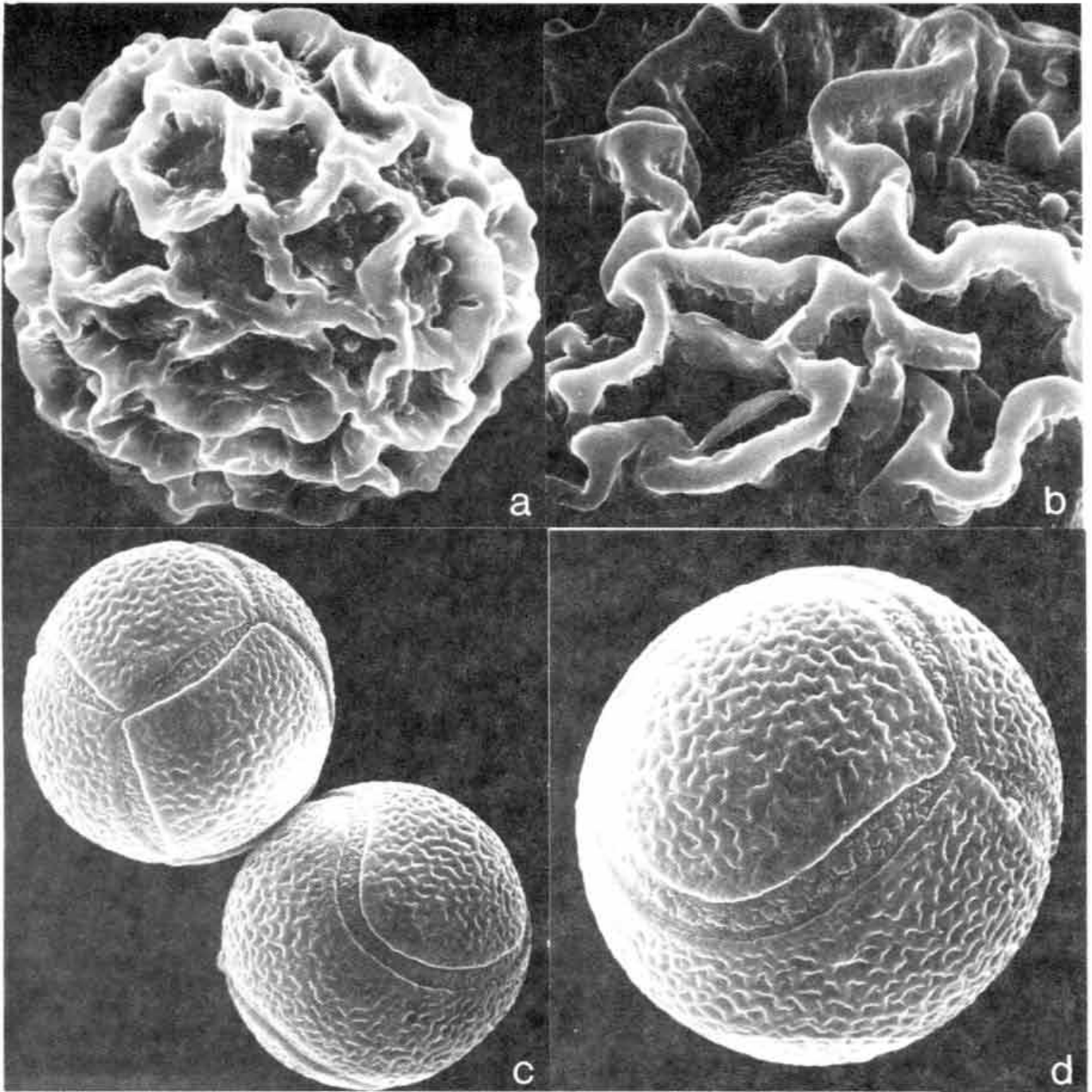


FIGURA No. 4

SEM photomicrographs of *Ruellia* and *Aphelandra* pollen. a-b: *Ruellia cuatrecasatii* (Cuatrecasas & Willard 26123). a. Equatorial view, x 1,000. b. Portion of surface, x 2,500. c-d: *Aphelandra antioquiensis* (Callejas et al. 2433). c. Equatorial view, x 1,500. d. Equatorial view, x 2,500.

the lateral pair 1.5 mm broad, acuminate, all glabrous and striate-nerved, the nerves indurate at base; corolla orange, 5-6.5 cm long, glabrous proximally, glandular-pubescent distally, the trichomes barely 0.25 mm long, the tube erect, slender, 2 mm broad at base, gradually enlarged to a cylindrical, subventricose throat 7.5 mm broad, the upper lip erect, ovate, 18-20 mm long, bilobed at tip, the lobes triangular, 5 mm long, 4 mm broad at base, acuminate, the lower lip spreading, the middle lobe of the lower lip ovate, 20 mm long and 9 mm broad,

acuminate, the lateral lobes 6 mm long, partly adnate to the lower part of the upper lip, the free portions triangular, about 1.5 mm long and broad, acute; stamens reaching the notch of the upper lip; anthers 6.5 mm long and 1.8 mm broad; pollen grains (Fig. 4c-d) prolate spheroidal, 34 μ m in diam, the exine verrucose, the colpi appear to be converging in a manner suggesting that the surface of each grain is divided into six tetragonal sections; ovary glabrous.

Capsule not seen.



FIGURA No. 5

SEM photomicrograph of *Justicia* pollen. a-b: *Justicia kirkbridei* (Kirkbride 2239). a. Equatorial view, x 2,500. b. Portion of surface, x 7,000.

Distribution: Abundant, forming dense colonies in moist tropical thicket forest. Known only from the type locality.

Aphelandra antioquiensis is related to *A. killipii* Leonard (*A. cuatrecasatii* fide Wasshausen), found in the department of Chocó. This species, however, lacks the bracteal nectary patches, the spike is solitary, about 10 cm long, the bracteoles are minute, triangular, 2 mm long and the calyx segments are about 0.75 mm long.

Justicia kirkbridei Wasshausen, sp. nov. Fig. 3 (A-F).

Planta volubilis, caulibus subquadrangularibus (angulis rotundatis), glabris. Foliorum lamina ovata vel late lanceolata, acuminata (apice ipso obtuso), base acuta vel obtusa, aliquanto tenuis, integra vel undulata, glabra vel subtus costa parce hirtella; cymae axillares, pedunculo subquadrangulari, parce hirtello; bractee ramorum pedunculo parvae foliaceae; bractee flores subtendentes spathulatae, glabrae vel subglabrae; calycis segmenta elliptica, subaequalia, glabra; corolla alba, labiis purpureo-lineatis, glabra vel parce puberula, tubo subcylindrico, labiis subaequalibus, labio superiore erecto, ovato, apice bilobato, labio inferiore patulo, 3-lobato, lobis ovatis, rotundatis.

ca Los Arroyitos, ca 10°56' N, 73°58' W, ca 1800 m, 28 Sep. 1972 (US holotype; NY isotype).

Climbing to 4 m high; stems subquadrangular, the angles rounded, glabrous or sparingly pubescent at or near the nodes, the trichomes retrorsely curved. Leaves short-petiolate, the petioles 2-5 mm long, subquadrangular, puberulous, the trichomes similar to those of the stem, the blades ovate to broadly lanceolate, 5-6.5 cm long and 1.9-2.4 cm broad, short-acuminate (the tip itself obtuse), acute to obtuse at base, thin, entire or undulate, glabrous or the costa sparingly hirtellous, this and the lateral veins (about 4 pairs) faint, the cystolith numerous and subpunctiform, conspicuous under a lens on the upper surface. Flowers borne in axillary cymes 2-2.5 cm long, the peduncles 1 cm long, subquadrangular, the secondary peduncles 4-5 mm long, both primary and secondary peduncles sparingly hirtellous with more or less curved trichomes; bracts subtending the secondary peduncles leaflike, ovate, 4 mm long, 3 mm broad, obtuse at tip, narrowed at base, the pedicels about 1 mm long; bracts subtending the flowers spathulate, 4 mm long, about 1 mm broad, obtuse, ciliate, the flat surfaces glabrous or nearly so; calyx 4 mm long, the segments 5, subequal, elliptic, 3 mm long, 1 mm broad, glabrous or the costa sparingly ciliolate; corolla white with purplish lines on medial inner surface of lips and throat, 10-11 mm long, glabrous or sparingly and minutely pubescent, the tube 2 mm

Type: *J.H. Kirkbride, Jr. 2239*, Colombia, Magdalena, Sierra Nevada de Santa Marta, N. of fin-

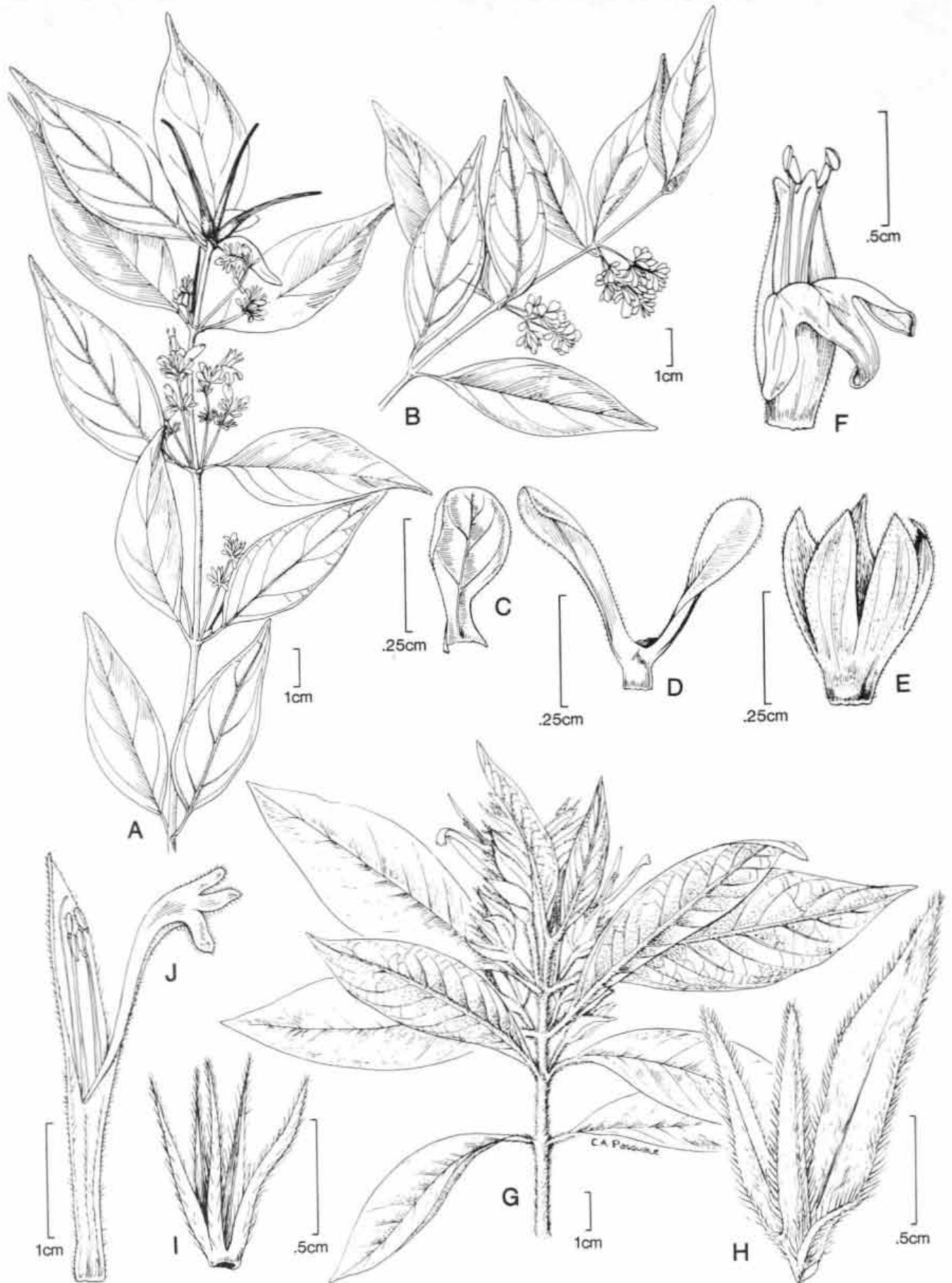


FIGURA No. 3

A-F: *Justicia kirkbridei* (Kirkbride 2239). A. Habit. B. Flowering branch. C. Bract subtending secondary peduncle. D. Bracts subtending flowers. E. Calyx. F. Corolla. -G-J: *Justicia cuatrecasasi* (Zarucchi 2101). G. Habit. H. Bract and bracteoles. I. Calyx. J. Corolla.

broad near base, subcylindrical, 3.2 mm broad at throat, the lips subequal, 6 mm long, the upper lip erect, ovate, 3 mm broad near the base, gradually narrowed to a rounded bilobed tip 1.5 mm broad, the lobes about 0.5 mm long, the lower lip spreading, deeply 3-lobed, the lobes ovate, 4 mm long, the middle lobe 2 mm broad, the lateral ones 1.5 mm broad, all rounded at tip; stamens exerted 6 mm beyond the mouth of the corolla tube, glabrous, the anthers 1.5 mm long, 1.25 mm broad, equally and somewhat obliquely attached to the connective, all lobes about 1 mm long; pollen grains 3-porate (pleurotreme), prolate, 40 μ m long, 20 μ m broad, with one row of insulae bordering the aperture (Fig.: 5a-b); ovary glabrous.

Capsules not seen.

Distribution: In forest, known only from the type locality.

Characterizing *Justicia kirkbridei* are flowers borne in short (2-2.5 cm long) cymes, the climbing habit, and the small (10-11 mm long) corollas. The apical meristem of one of the type specimens appears to be diseased (probably due to an insect gall) hence, the unusual elongations at the tip (Fig. 3A).

Justicia cuatrecasii Wasshausen, sp. nov.

Fig. 3(G-J)

Frutex; caulibus subteretibus, dense lanatis, pilis aureobrunneis. Foliorum lamina ovata vel late lanceolata, acuminata, basi angustata, in petiolum decurrens, firma, integra vel undulata, utrinque strigosa, costa et venis laterilibus subtus prominentibus, dense velutinosa, pilis aureobrunneis; spicae terminales et subterminales; bracteis imbricatis et secundis, rhache et pedunculis lanatis; bracteae dorsales lance-ovatae, ciliatae, pilosae; bracteae ventrales oblanceolatae, acutae, ciliatae, pilosae; bracteolae lanceolatae, ciliatae, pilosae; calycis segmenta lanceolata, ciliata, pilosa, pilis glandulosis paucis intermixtis; corolla subviridis, parce hirtella, labiis subaequalibus, labio superiore erecto, ovato, labio inferiore patulo, 3-lobato, lobis oblongis, rotundatis.

Type: James L. Zarucchi 2101. Colombia, Vaupés, Mitú and vicinity; along Río Vaupés at Circasia, 21 Sep. 1976 (US holotype).

Shrub to 1.5 m tall; stems subquadrangular, at least the upper portions densely golden-brown woolly, the trichomes erect, 1 mm long. Leaves short petiolate, the petioles 7-10 mm long, densely golden-brown woolly, the trichomes similar to those of the stem, the blades ovate to broadly lanceolate, 7.5-8 cms long, 2.5-3 cm broad, acuminate

to short-acuminate (the tip itself blunt), narrowed at base and briefly decurrent on the petiole, rather firm, entire or undulate, the upper surface golden-green, densely strigose, the lower surface densely velutinous, especially the costa and lateral veins (8-10 pairs), prominent on the lower surface of the leaf blade, less so above, the trichomes golden-brown, about 1 mm long. Spikes terminal or in pairs with one subterminal, 4-5 cm long and 1-1.5 cm broad, the bracts densely imbricate and secund, the peduncles 1.2-2 cm long, these and the rachises densely golden-brown woolly, with erect trichomes; dorsal bracts sterile, lance-ovate, 17 mm long and 5.5 mm broad, long-acuminate and mucronate, obtuse at base, densely pilose and ciliate, the trichomes golden-brown, about 1 mm long, more or less spreading; ventral bracts (those subtending the flowers) narrowly oblanceolate, 15 mm long, 3 mm broad, acute, gradually narrowed from about the middle to the base, densely pilose and ciliate, the trichomes similar to those on the dorsal bract; bracteoles lanceolate, 10 mm long and 1 cm broad, acuminate, pilose and ciliate, calyx 9 mm long, the segments lanceolate, 0.75 mm broad, slenderly acuminate, ciliate and pilose, some of the trichomes gland-tipped; corolla pale whitish-green, about 3 cm long, sparingly hirtellous, the trichomes mostly spreading, straight, to 0.3 mm long, the tube 2 mm broad near base, thence gradually enlarged to 4 mm at mouth, the lips subequal, the upper lip ovate, erect, 16 mm long, 5 mm broad, subacute (the tip itself blunt), the lower lip 3-lobed, more or less spreading, narrowly obovate, 4.5 mm broad at 4 mm below tip, the lobes oblong, 4 mm long, the middle lobe 1.5 mm broad, the lateral ones 1 mm broad; stamens exerted about 10 mm beyond the mouth of the corolla tube, the filaments glabrous, the anther cells superposed and obliquely attached to the connective, about 1.5 mm long and 0.5 mm thick, both lobes puberulous dorsally, the trichomes stiff, erect, straight, white, the lower lobe terminated in a blunt tail 0.5 mm long; style 2.5 cm long, glabrous; ovary glabrous. Capsules 4-seeded, clavate, 9 mm long, 3 mm broad, 2 mm thick, sparingly hirtellous toward base, hirtellous toward tip, the trichomes spreading or retrorse and subappressed, 0.2 mm long; seeds not seen.

Distribution: In low tree forest adjacent to savannah. Known only from the type locality.

Justicia cuatrecasii is not nearly allied to the other known species of pantropical *Justicia*. It is readily distinctive from the other known taxa by its closely imbricate and secund, densely golden-brown woolly bracts, as well as the same indumentum on the stem, leaf blades and the petioles, as well as, the peduncles and the rachis.